

COMBIPRESS "CB2"

Pressure boosting sets

 Domestic use

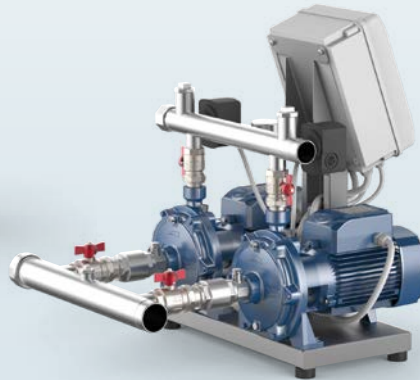
 Agricultural use

 Civil use

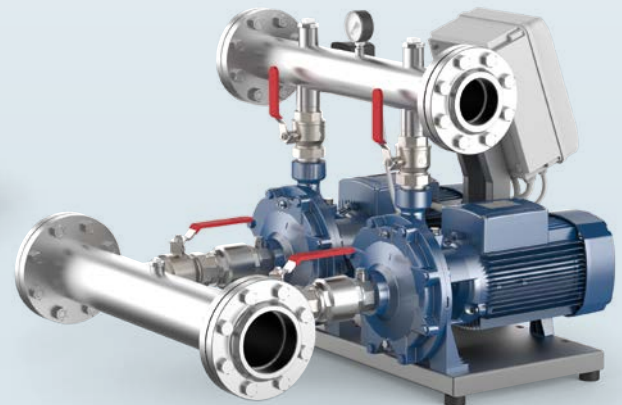
 Industrial use



CB2 - MK



CB2 - 2CP



CB2 - 2CP

OPERATING PRINCIPLE

COMBIPRESS are pressure boosting sets consisting of two pumps assembled in a ready to be mounted unit.

The sets are arranged so that, at each increase in demand by the users, one or both pumps in succession start automatically. The operation of the number of pumps necessary to satisfy the demand for water results in a marked reduction in power consumption.

The electronic circuit in the control box alternates the operation of the pumps.

USES

- Clean water and chemically non-aggressive liquids.
- Water supply: pressure boosting in industrial applications, blocks of flats, hotels, communities, water treatment plants, campsites, schools, hospitals, barracks, etc.
- Irrigation: playing fields in general (football, golf, etc), agriculture, artificial snow systems.

CONSTRUCTION CHARACTERISTICS

- **PUMPS** complete with intake and exhaust manifolds, spherical valves and non-return valves.
- **BLOCK** constructed from a metal section.
- **COMPONENTS** of command and control installed on the exhaust manifold and consisting of a pressure gauge and two pressure switches which can be set by the user (the factory setting is regulated based on the average use of the set).
- **CONTROL BOX** fitted with a gate block switch, a low voltage pressure switch control circuit, an electronic circuit to alternate the operation of the pumps, an amperometric protection (overload cut-out) and an anti-rebound system at the start of the pumps (to avoid continuous false starts in the case of short and limited requests by the user).

CB2m: single-phase 230 V - 50 Hz.

CB2: three-phase 230/400 V - 50 Hz up to 4 kW.

400/690 V - 50 Hz from 5.5 to 7.5 kW.

CONSTRUCTION AND SAFETY STANDARDS

EN 60335-1
IEC 60335-1
CEI 61-150

EN 60034-1
IEC 60034-1
CEI 2-3



CERTIFICATIONS

Company with management system certified DNV
ISO 9001: QUALITY
ISO 14001: ENVIRONMENT AND SAFETY



PERFORMANCE DATA

50 Hz n= 2900 rpm HS= 0 m

MODEL	POWER (P ₂)		Q* m ³ /h l/min	H metres											
	1~	3~		kW	HP	0	1.2	2.4	4.8	7.2	9.6	12	14.4	16.8	19.2
					0	20	40	80	120	160	200	240	280	320	360
CB2 - MK 3/3-N	●	●	2x0.75	2x1	52	50	49	45	38	28					
CB2 - MK 3/4-N	●	●	2x1.1	2x1.5	69.5	67	65.5	60	50.5	38					
CB2 - MK 3/5-N	●	●	2x1.1	2x1.5	87	83	82	75	63.5	47					
CB2 - MK 3/6-N	●	●	2x1.5	2x2	104	100	98	90	76	56					
CB2 - MK 5/4-N	●	●	2x1.1	2x1.5	56	-	55	52.5	48	41.5	32	20			
CB2 - MK 5/5-N	●	●	2x1.1	2x1.5	70	-	69	66	60	51.5	40	25			
CB2 - MK 5/6-N	●	●	2x1.5	2x2	84	-	83	79	72	62	48	30			
CB2 - MK 5/7-N		●	2x1.8	2x2.5	98	-	96	92.5	84	72.5	56	34			
CB2 - MK 5/8-N		●	2x2.2	2x3	112	-	110	105.5	96	82.5	64	40			
CB2 - MK 8/4-N	●	●	2x1.5	2x2	56	-	-	54	52	50	46	39	31.5	24	15
CB2 - MK 8/5-N		●	2x1.8	2x2.5	70	-	-	67.5	66	63	58	50	40	30	18
CB2 - MK 8/6-N		●	2x2.2	2x3	86	-	-	82	78	74	68	58	46.5	35	20

MODEL	POWER (P ₂)		Q* m ³ /h l/min	H metres														
	1~	3~		kW	HP	0	0.6	1.2	2.4	3.6	4.8	7.2	8.4	9.6	10.8	12.0	13.2	14.4
					0	10	20	40	60	80	120	140	160	180	200	220	240	260
CB2 - 4CP 100-C	●		2x0.75	2x1	50	50	49	47	45	42	37	34	30.5	26.5	22	17	11	5

MODEL	POWER (P ₂)		Q* m ³ /h l/min	H metres																	
	1~	3~		kW	HP	0	2.4	4.8	7.2	9.6	12.0	13.2	14.4	16.8	19.2	21.6	24.0	30.0	36.0	42.0	48.0
					0	40	80	120	160	200	220	240	280	320	360	400	500	600	700	800	
CB2 - 2CP 25/130N	●	●	2x0.75	2x1	42	39	34	28.5	22	15											
CB2 - 2CP 25/14B	●	●	2x1.1	2x1.5	54	52	47.5	41	33	22											
CB2 - 2CP 25/16C	●	●	2x1.1	2x1.5	47	46	44	40	35	30	27	24									
CB2 - 2CP 25/16B	●	●	2x1.5	2x2	58	56	54	51	47	43	40	37	30								
CB2 - 2CP 25/16A		●	2x2.2	2x3	68	67	64.5	62	58	54	51	48	41	32							
CB2 - 2CP 32/200C		●	2x3	2x4	70	-	66.5	65	63	60.5	59	58	55	52	49.5	46.5	36				
CB2 - 2CP 32/200B		●	2x4	2x5.5	85	-	81	79	77	75	74	72	69	66	62	58	49				
CB2 - 2CP 32/210B		●	2x5.5	2x7.5	94	-	94	93	91	89	87	86	83	79	75	70	56				
CB2 - 2CP 32/210A		●	2x7.5	2x10	112	-	111	110.5	110	108	107	106	102	99	94	89	74				
CB2 - 2CP 40/180C		●	2x4	2x5.5	64	-	-	-	-	62	61.3	60.5	59	57.5	56	54.5	49	43	35		
CB2 - 2CP 40/180B		●	2x5.5	2x7.5	76	-	-	-	-	73	72.5	72	71	70	69	67.5	64	59.5	54	46	
CB2 - 2CP 40/180A		●	2x7.5	2x10	88	-	-	-	-	85	84.5	84	83	82	81	79.5	76	72	67	60	

Q = Flow rate H = Total manometric head HS = Suction height

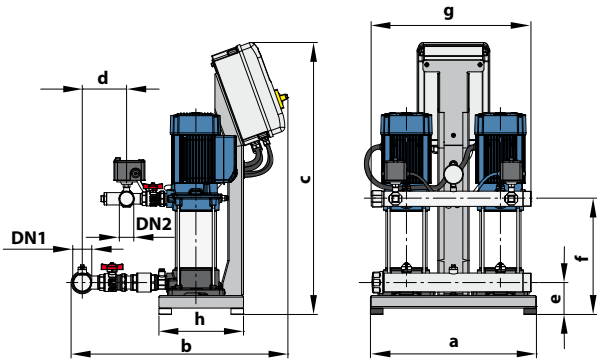
Tolerance of characteristic curves in compliance with EN ISO 9906 Grade 3B.

* The delivery capacity of the two pumps is indicated

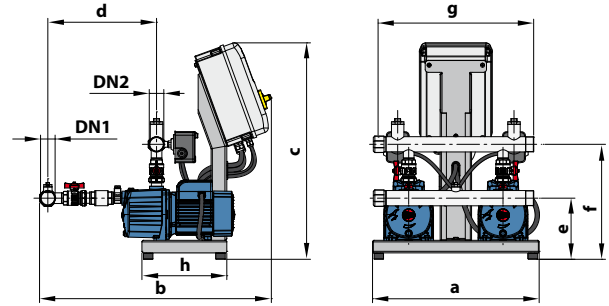
➡ The three-phase pumps are fitted with high performance motors up to P2=1.1kW in class IE2 and from P2=1.5kW in class IE3 (IEC 60034-30)

COMBIPRESS "CB2"

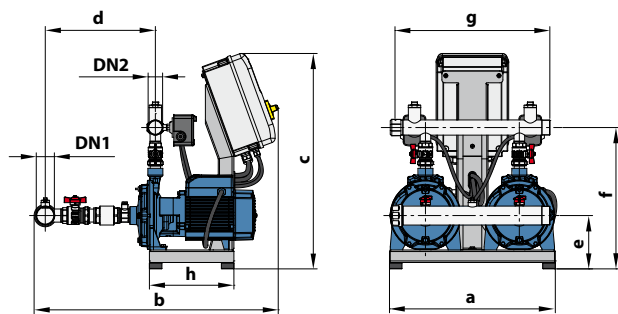
DIMENSIONS AND WEIGHT



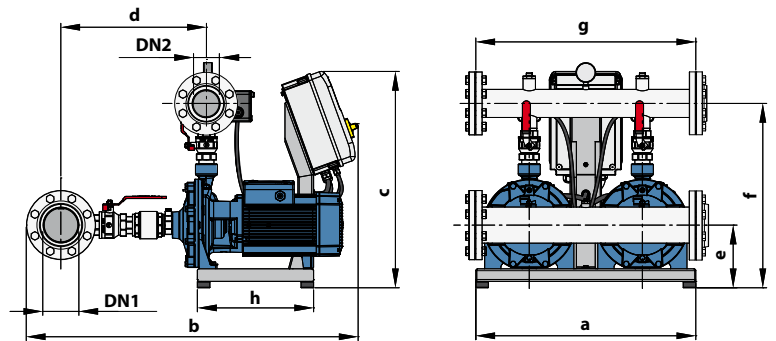
CB2-MK



CB2-4CP



CB2-2CP 25/ • CB2-2CP 32/



CB2-2CP 40/

MODEL		PORTS		DIMENSIONS mm								kg					
Single-phase	Three-phase	DN1	DN2	a	b	c	d	e	f	g	h	1~	3~				
CB2 - MKm 3/3-N	CB2 - MK 3/3-N	2"	1½"	530	692	868	142	102	251	500	270	58.0	59.0				
CB2 - MKm 3/4-N	CB2 - MK 3/4-N								275			59.0	59.0				
CB2 - MKm 3/5-N	CB2 - MK 3/5-N								299			60.0	60.0				
CB2 - MKm 3/6-N	CB2 - MK 3/6-N								323			66.0	64.0				
CB2 - MKm 5/4-N	CB2 - MK 5/4-N								275			59.0	59.0				
CB2 - MKm 5/5-N	CB2 - MK 5/5-N								299			59.0	60.0				
CB2 - MKm 5/6-N	CB2 - MK 5/6-N								323			65.0	63.0				
-	CB2 - MK 5/7-N								347			-	66.0				
-	CB2 - MK 5/8-N								371			-	67.0				
CB2 - MKm 8/4-N	CB2 - MK 8/4-N								2½"			1½"	530	737	868	178	102
-	CB2 - MK 8/5-N	285	-	68.0													
-	CB2 - MK 8/6-N	309	-	68.0													
CB2 - 4CPm100-C	-	1½"	1½"	530	737	688	346	194	366	500	270	79.0	-				
CB2 - 2CPm 25/130N	CB2 - 2CP 25/130N	2"	1½"	530	746	688	343	152	394	500	270	52.5	51.0				
CB2 - 2CPm 25/14B	CB2 - 2CP 25/14B											771	153	417	70.5	70.0	
CB2 - 2CPm 25/16C	CB2 - 2CP 25/16C											688	352	170	452	79.5	79.0
CB2 - 2CPm 25/16B	CB2 - 2CP 25/16B																
-	CB2 - 2CP 25/16A											-	-	-	-	-	82.0
-	CB2 - 2CP 32/200C											-	-	-	-	-	112.0
-	CB2 - 2CP 32/200B	3"	2"	700	982	688	450	192	535	700	370	-	118.0				
-	CB2 - 2CP 32/210B											-	149.0				
-	CB2 - 2CP 32/210A											-	156.0				
-	CB2 - 2CP 40/180C											-	168.0				
-	CB2 - 2CP 40/180B	4"	3"	700	1056	688	463	199	587	700	370	-	178.0				
-	CB2 - 2CP 40/180A											-	188.0				